



QUICK RECOVERY FOR MSWORD

Quick Recovery for MS Word is efficient MS Word file recovery software, which rebuilds and recovers word document files, corrupted due to incorrect system shutdown, unexpected software crash, virus attacks or error reading media where Word documents are stored. Quick Recovery for Word is a do-it yourself repairing tool developed to restore corrupted or damaged word document files that fails to open. Using the unique GFETch (Guided File Excavation Technology) algorithm, software performs a complete scan of the damaged MS Word document and extracts the recoverable data from the corrupt MS Word document file. Quick Recovery is fast, simple and easy to use file recovery software. Quick Recovery for Word supports almost all versions of MS Word which includes MS Word 2003, MS Word XP, MS Word 2000, MS Word 97 document files.

Who Suffers Most

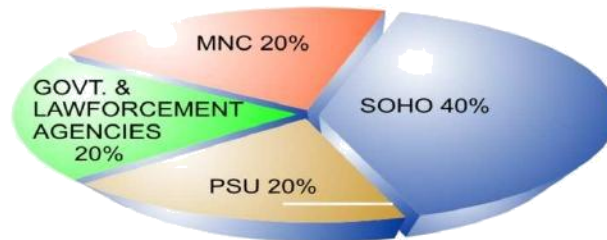
Features

Recovery Matrix

Interface

System Requirement

Who Suffers most?



Recovery matrix:

- Corrupted files
- Extract text from fragmented files
- Virus infected file
- Inaccessibility due to bad sectors
- Corrupted due to version incompatibility
- Unexpected system shutdown

100% data recovery is possible if:

- Header or footer is corrupted
- Internal structure of the file is changed
- Formatting is corrupted
- File summary, user or track information is corrupted
- File is edited using some other package

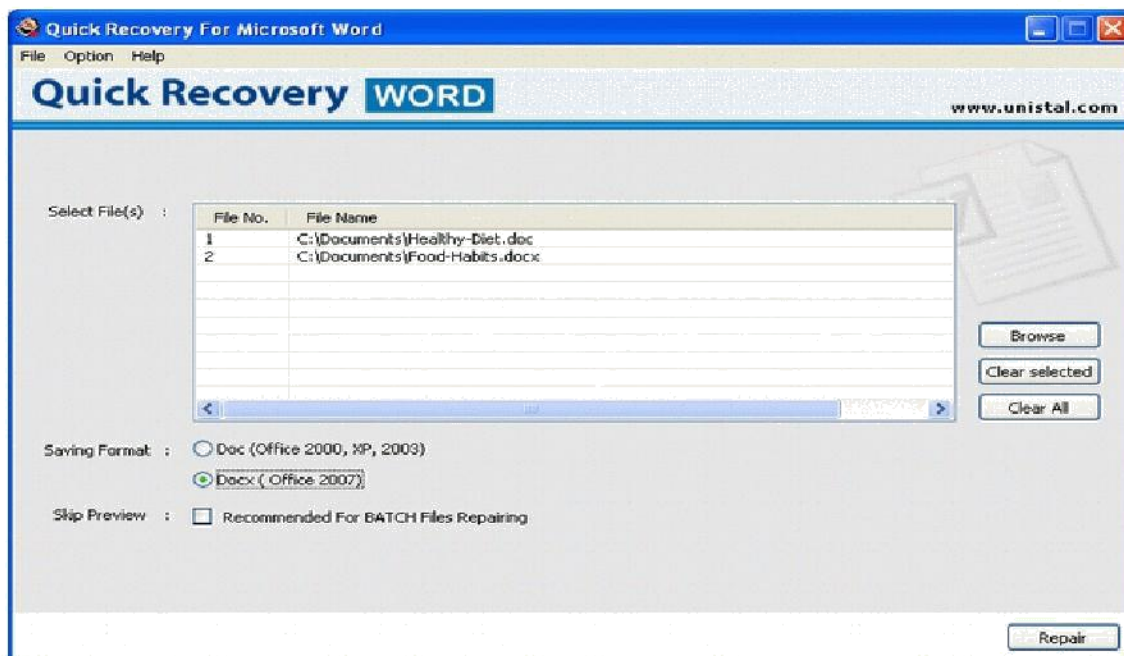
Other conditions when data may be recovered partially if not completely:

- After opening the file only junk characters are shown
- MS Word error while opening the file: "Word experienced an error trying to open the file"
- After the media crash, file is recovered using data recovery software, but not opening
- A large fragmented file is to be recovered.
- Messages like sector not found, data error reading disk, are shown.

HOW QUICK RECOVERY FOR WORDS WORKS?

Install Quick Recovery for MS Word on Windows OS hard disk
Run Quick Recovery from the desktop or from Programs
Browse and select the corrupt **.DOC**, **.DOCX**, which you want to repair
Select the mode
By clicking on Next, the analysis+repairing+saving process will start

Interface



MS Word Versions Supported

- Microsoft Word 97, 2000, 2002(XP), 2003 & 2007.

System Requirements

- Windows NT/2000/XP/2003 Server/Vista/ Windows 7/Windows 8/
Windows 10
- **Microsoft Word** 97, 2000, 2002(XP), 2003 & 2007.
- 800MHz processor or higher.
- RAM:
 - 256 MB (Windows XP)
 - 1 GB (Windows Vista, Windows 7, Windows 8, Windows 10)
- 50 MB available hard disk space