

PORT LOCKER

Port Locker allows the user to safeguard data/ file from unauthorized access. It prevents vital & Important data to be transferred from one PC to another using Flash drive, DVD/CD writers, PCMCIA ports, Ethernet ports, Printer ports, Infrared ports and Bluetooth port. It provides the Options to lock/unlock single or multiple ports with authorized password. It allow user to lock ports with different lock type options as permanent, specific time duration and when the computer remains idle or untouched. It displays the alert as soon as an unauthorized action is performed against the lock ports. It provides complete log related to Permanent Blocked, Schedule Blocked or Un- Blocked Ports with actions performed including changes in settings, locking and unlocking the ports, setting scheduler etc.

FEATURES PORT LOCKER

SYSTEM REQUIREMENT

INTERFACE

BENEFIT TO USER

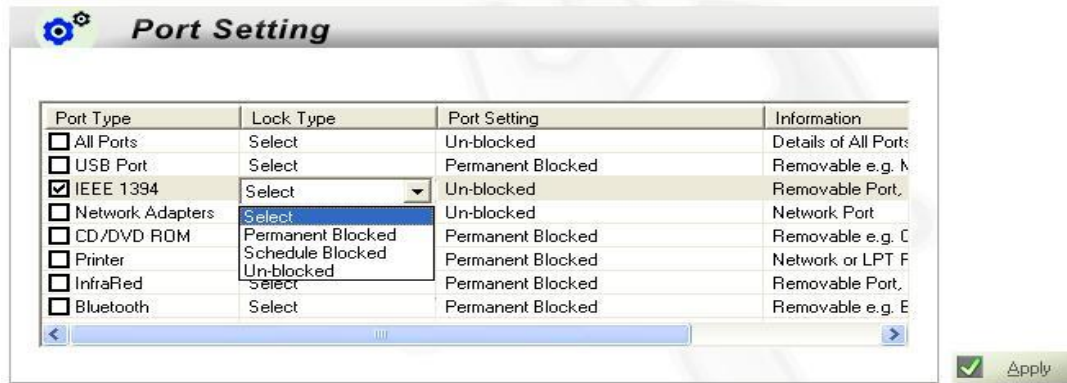
Feature:

- Lock Flash drive, DVD/CD writers, PCMCIA ports, Ethernet ports, Printer ports, Infrared ports and Bluetooth port.
- Options to open single or multiple ports with authorized password.
- Block ports to prevent unauthorized access.
- Block ports when PC is idle.
- Special feature of Print Screen Locking
- Block ports in scheduled duration.
- File Transfer Log shows the detail reports of files added, removed and renamed to and from USB mass storage device.
- Feature of USB Read Only makes any USB mass storage device read only.
- E-mail Filtering log shows the complete report of filtered and blocked Emails of the MS Outlook client.
- Unique feature of White listing the authorized USB by using unique hardware ID of the device.
- Alert, if any one tries to use the Locked Ports.

System Requirements:

- Windows NT/2000/XP/ Server 2003/Vista/ Server 2008/Windows 7 & Windows 8, Windows 10
- 800MHz processor or higher.
- RAM:
 - 512MB (Windows NT, 2000, Windows XP and Server 2003)
 - 1 GB (Windows Vista, Server 2008/ Windows 7/ Windows 8, Windows 10)
- 50 MB available hard disk space

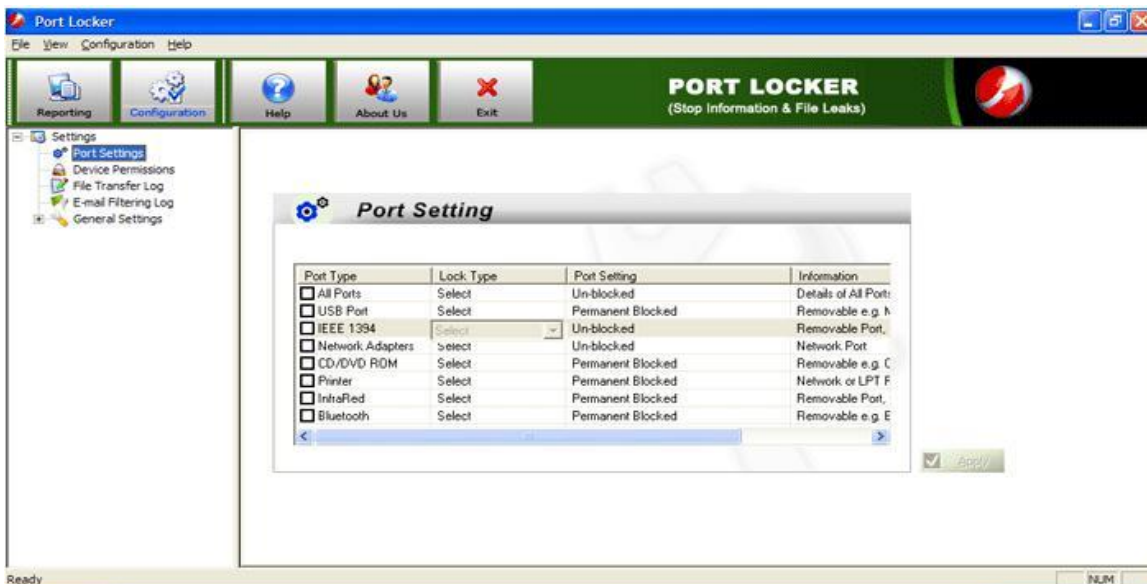
How to Lock the Ports?



Select the ports to be locked. If users want to lock all the ports at a time, select all ports option otherwise select the selected ports.
 Select the Lock type to lock the Port. And click Apply button.

Different Lock Types

- **Permanent Blocked:**
 Permanent Block, to lock certain ports permanently and then Click Apply button.
- **Schedule Blocked:**
 Specific or scheduled time to lock your ports, select Schedule Blocked option:
 - Lock System when idle.
 - Select Duration.



Benefits to User:

- Block ports to prevent unauthorized Access.
- Options to open/ lock single or multiple ports with password
- Block selected ports when PC is Idle
- Block selected ports for the particular time schedule
- Alert, if any one used the Locked Ports.