



## **PC REPORTER (Asset Tagging, Tracking & Early Warning)**

All information you create is stored in the hard disk. Every device has a life & usability. What if the hard disk physically fails suddenly! All data is lost! However if you were given pre-failure warnings, you would have taken the necessary action. PC Reporter alerts as soon as the hard disk starts to show pre-failure signs. PC Reporter also alerts for any changes in hardware, application or system settings. **PC Reporter** offers tagging about **CPU, Software, Hard Disk, Memory, Network, Printer, CD-ROM, Mouse, Keyboard, Operating System & prompt warning on any change in the tagged assets.**

### **PC REPORTER (Asset Tagging, Tracking & Early Warning)**

### **FEATURES OF PC REPORTER (Asset Tagging, Tracking & Early Warning)**

### **SYSTEM REQUIREMENT**

### **INTERFACE**

### **BENEFIT TO USER**

## **PC REPORTER (Asset Tagging, Tracking & Early Warning)**

PC Reporter (Asset Tagging, Tracking & Early Warning) is a utility that acts as an Asset Tagging, Tracking & Early Warning System for pending hard disk problems. The system is based on Self Monitoring Analysis and Reporting Technology (S.M.A.R.T). The hard disk's integrated controller works with various aspects or parameters to monitor various aspects of the drives / disk's performance and determines from this information if the disk is behaving normally or not.

## **Features of PC Reporter (Asset Tagging, Tracking & Early Warning)**

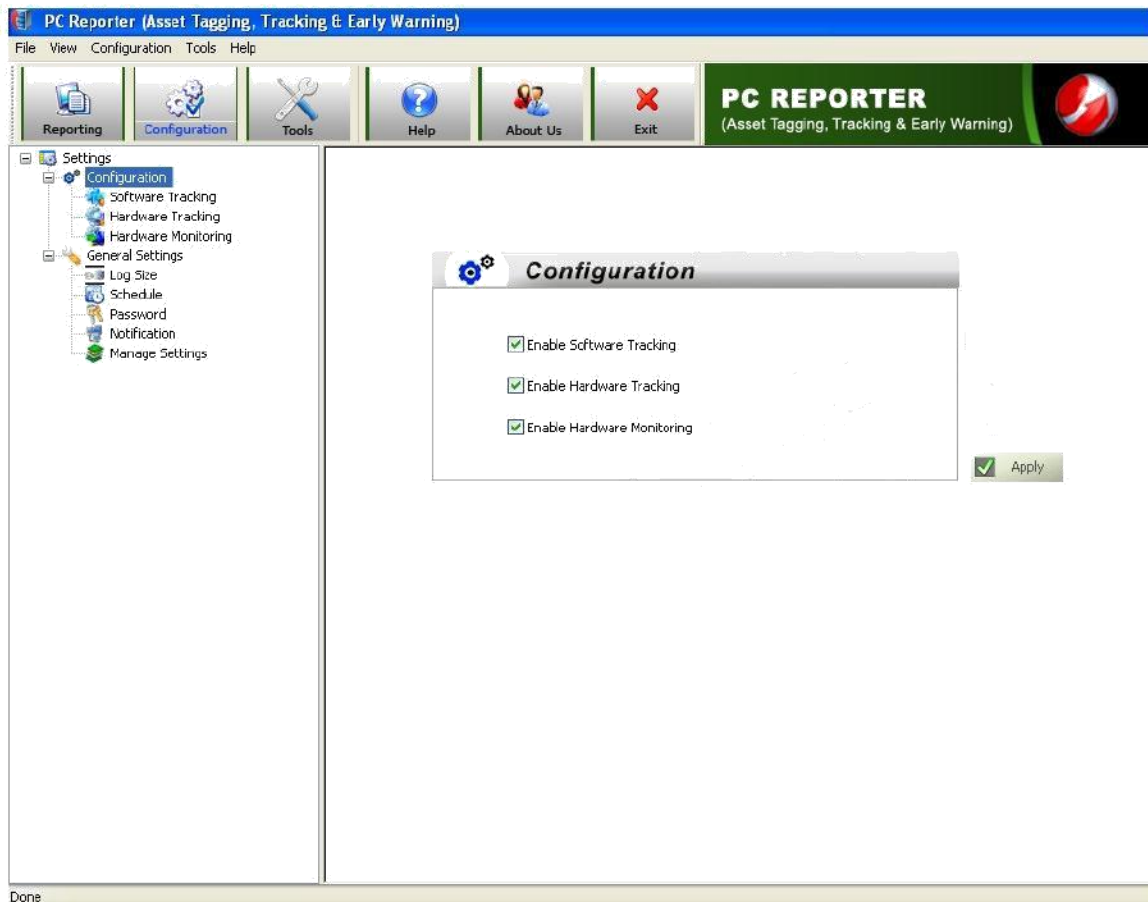
- ❖ PC Reporter Software Offers Asset Tracking Option to track hardware and software activities that are installed in the hard disks.
- ❖ Runs constantly in the background. Hence, provides real information.
- ❖ Provides standard hard disk information such as Serial/Model number, number of cylinders, and so on.
- ❖ Provides information on various hard disks attributes and also displays their fitness level.
- ❖ Able to scan and display bad sectors on hard disk(s).
- ❖ Scheduler to configure software parameters such as Temperature.
- ❖ Warning, Temperature Update and Log Scheduling.
- ❖ Maintains log reports of disk scans, disk status and so on.
- ❖ Can clone hard disks (that is, it can paste the contents of a potentially fatal disk onto a healthy disk).
- ❖ Provides graphical comparison of temperature fluctuations in relation to Warning / shutdown levels.
- ❖ Displays real time 'Benchmark' graph showing the Hard Disk data transfer rate and CPU usage.
- ❖ Can test any IDE/SATA disk.
- ❖ Simple and easy to use, with no loss in system performance.

## **System Requirements**

- ❖ Windows NT/2000/XP/2003/2008 Server/Vista/Windows 7/Windows 8/Windows 10
- ❖ 800MHz processor or higher.
- ❖ RAM:
  - 512MB (Windows XP and server 2003)
  - 1 GB (Windows Vista, Windows 7, Windows 10, Windows 8, Windows server 2008)
- ❖ 50 MB available hard disk space

## Interface

PC Reporter Software can be viewed using the PC Reporter icon on the System Tray and then clicking View S.M.A.R.T.



**Benefits to User:**

Drive Monitoring Software gives the current values of various hard disk parameters such as Temperature, Head Flying Height, Spin-Up Time etc and compares these values to a Threshold value below / above which the hard disk is likely to fail. The moment any one of the current values equals or exceeds the threshold value, the utility displays a warning of impending problems.

The fundamental principle behind S.M.A.R.T is that many problems with hard disks don't occur suddenly. They result from a slow degradation of various mechanical or electronic components. The hard disks parameters usually exhibit a gradual, detectable decline in performance and it is when a parameter value approaches its safety limit that the Stellar Smart issues a warning.