



## **QUICK RECOVERY FOR INCREDIMAIL**

**[Quick Recovery for IncrediMail](#)**

**[Who Suffers most](#)**

**[Features](#)**

**[Recovery Steps](#)**

**[Recover and Repair](#)**

**[Recover and Repair Address Book](#)**

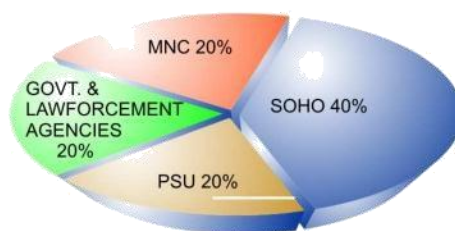
**[Repair Address Book](#)**

**[FREQUENTLY ASKED QUESTIONS](#)**

IncrediMail is colorful program for creating animated e-mail messages. Incredimail is a freeware. The one drawback of Incredimail is, it lacks built-in data repair capability. If you have this program and you happen to loose your mail, do not worry. Quick Recovery for Incredimail is a tool that recovers lost Incredimail data. Incredimail data stores as an .IMM, .IMH, .IMB file on disk. If a file gets damaged, due to software problem or for any other reason, there is no way to fix it and get your important messages back from within Incredimail. We understand how utterly frustrating it may be to lose your correspondence. That is why we are glad to offer you **Quick Recovery for Incredimail**.

**Quick Recovery For Incredimail** - It is an automated & do-it-yourself mail recovery software, capable of recovering and repairing Incredimail messages including mail attachments preserving the original folder structure using its unique Guided File Excavation Technology (GFETch). After the recovery a separate subfolder is created on the disk. Quick Recovery can recover accidentally deleted Incredimail messages.

#### Who suffers most?



#### Features:

- Recovers and Repairs mails from Virus corrupted IMH files (mails) and IMB files (address book).
- Supports .IMH and .IMB file formats: Incredimail.
- Recovers and Repairs emails with attachments & address books
- Saves them as separate email messages where address books are saved in .txt format.
- Recovers and extract mail from damaged IMH files.
- Recovers Addresses from damaged IMB files.
- Recovers emails from password protected IMH files and saves them in .EML files.
- Recovered messages can be read directly in Incredimail.
- Recovered messages can be imported in Incredimail.

## Data Recovery and repair is possible if;

- Files are accidentally deleted.
- Header or footer is corrupted
- File summary, user or track information is corrupted
- Internal links are Intact.
- A mail is deleted
- Complete mail folder is deleted

## How Quick Recovery IncrediMail Works?

### Run **Quick Recovery for IncrediMail**

Select the appropriate mode

Select IMH or IMB file to be recovered or repaired.

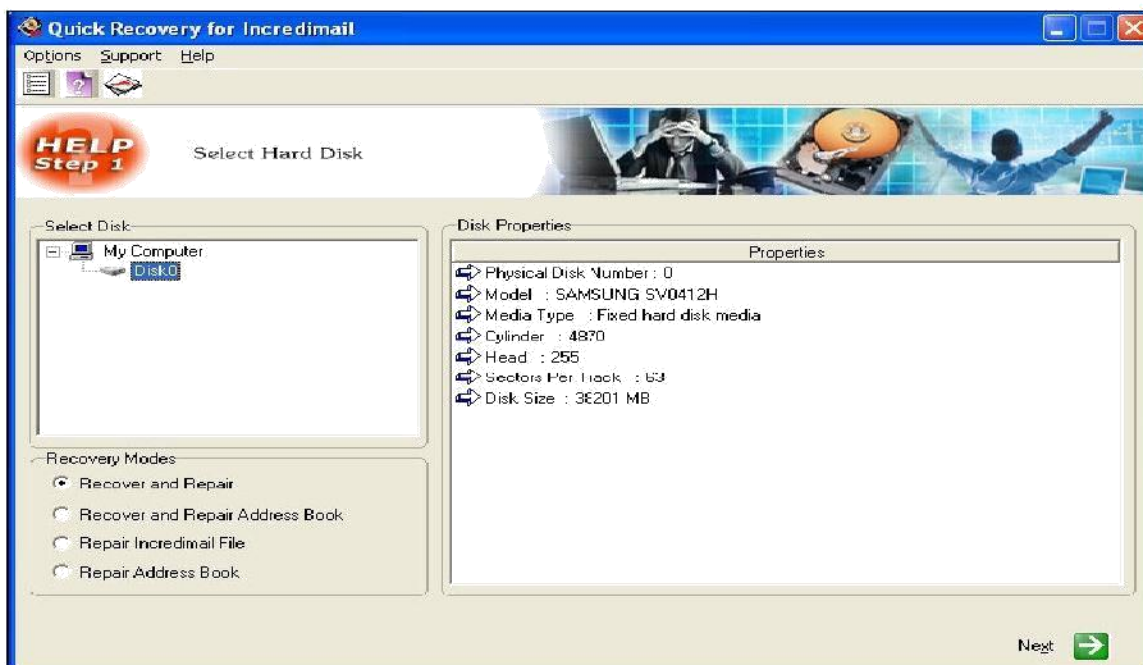
Give the target path where, the file/emails to be recovered.

By clicking on Next, the analysis+repairing+saving process will start

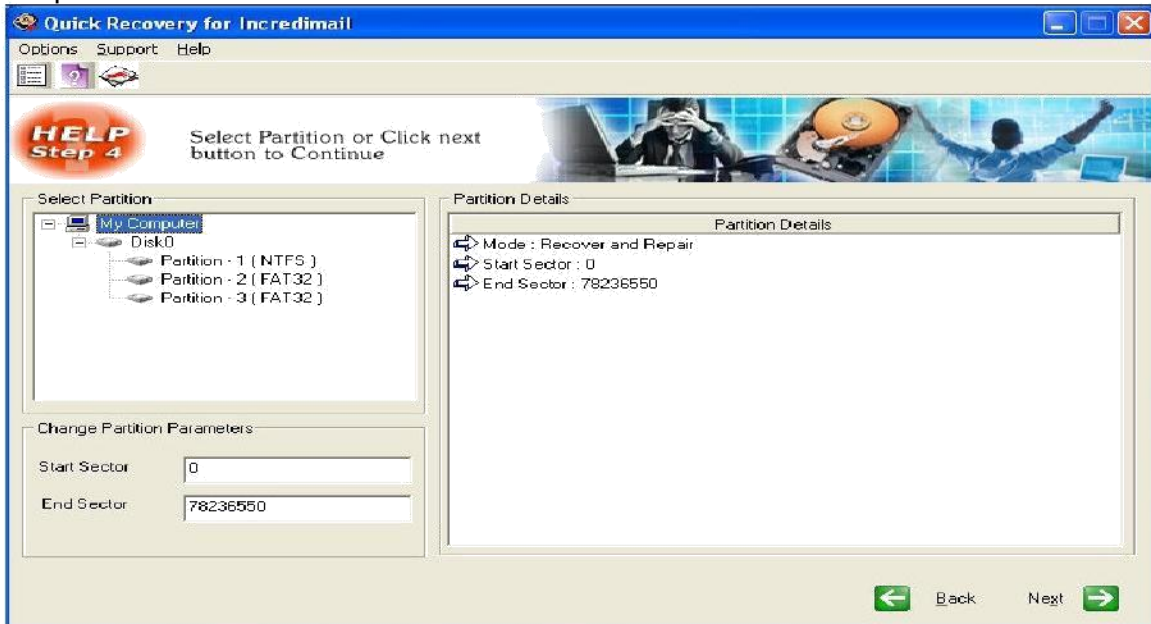
## Recovery Steps

### 1. Recover and Repair

First select the disk from which you want to recover your mails then select Recover and Repair and press Next.



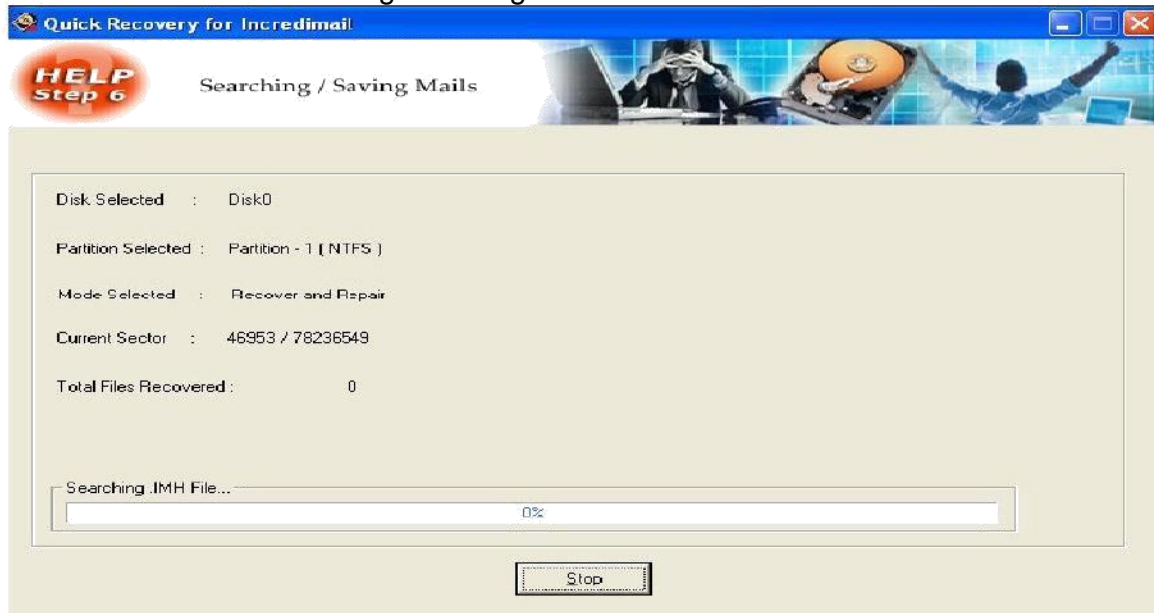
Select the partition where you want to search .IMH file(s). You can also change the search range by modifying **Start Sector** and **End Sector**. After selecting partition click next.



In the next screen, as shown below, select path to save mails from .IMM file, found after raw search.

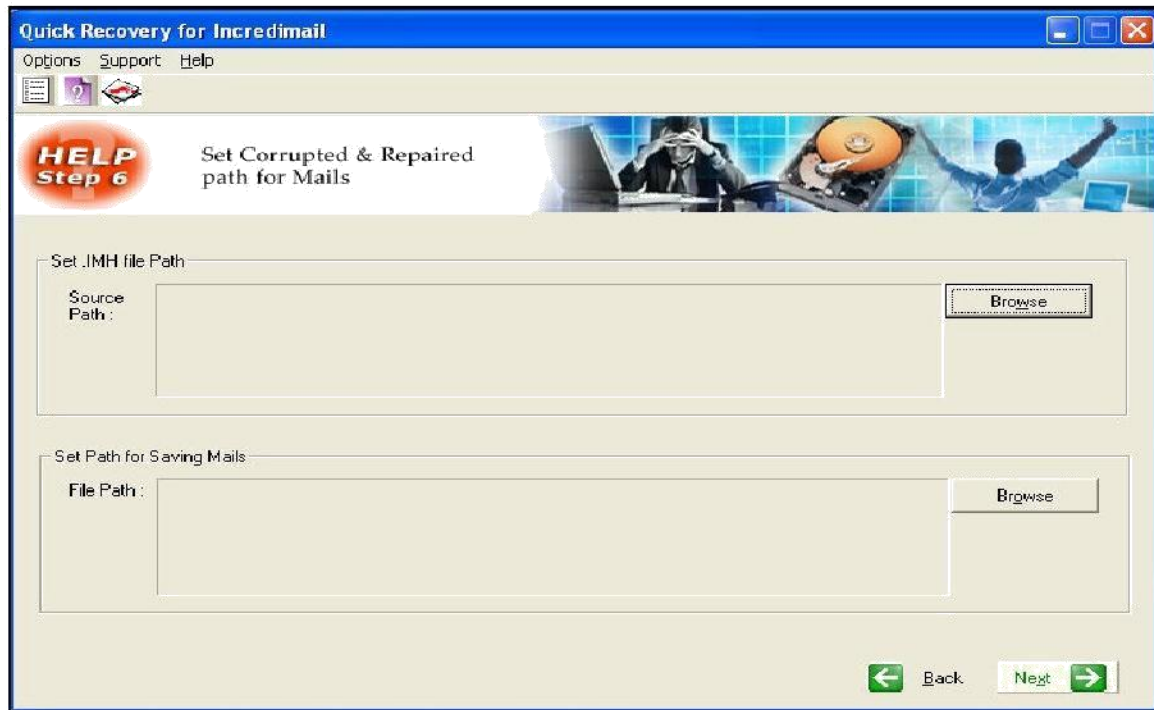


Click Next to start Searching & Saving lost mails



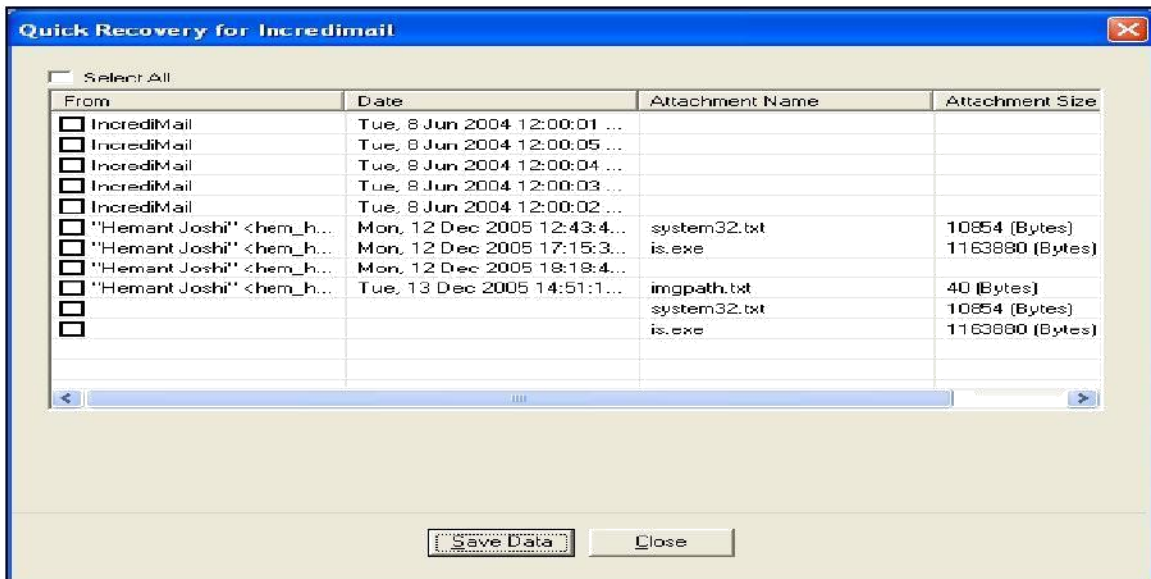
## 2. Using Repair Incredimail file option

Select "**Repair Incredimail file**" option from first screen and click next. In the next screen as shown below select corrupted file and path to save repaired .IMH file.



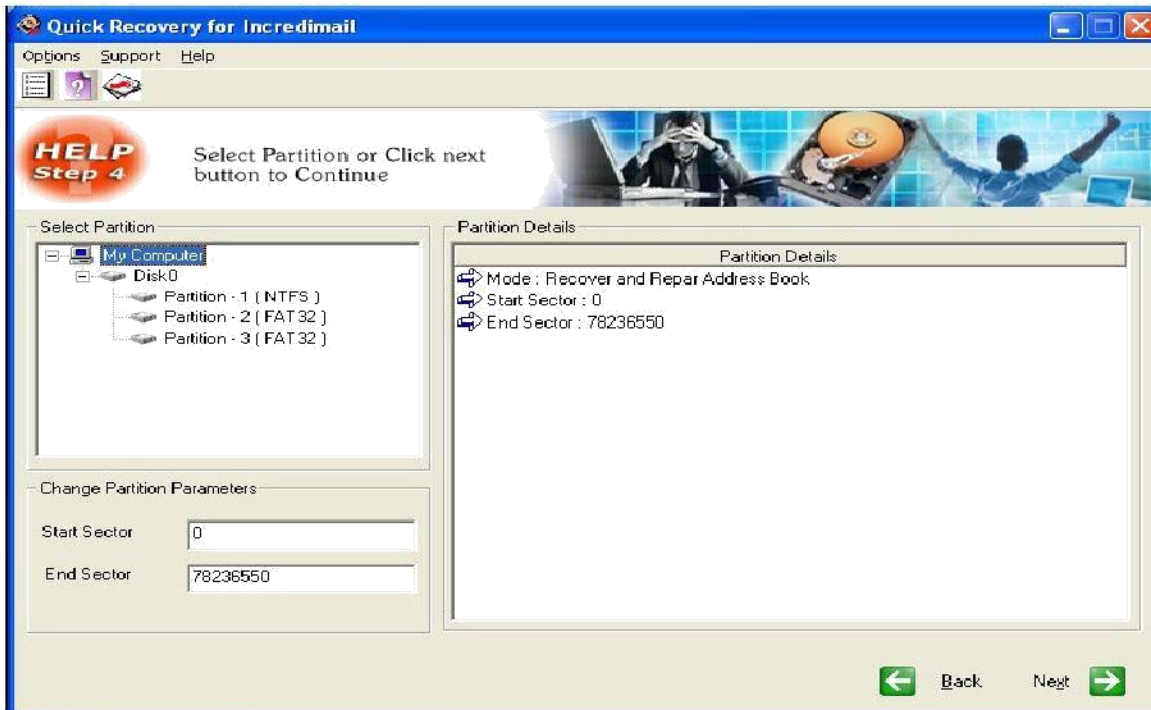
Click Next button to continue. If destination doesn't exist then QR will automatically ask to create folder.

Click Next button and following screen will be displayed, where you can select all or desired mails to be saved.



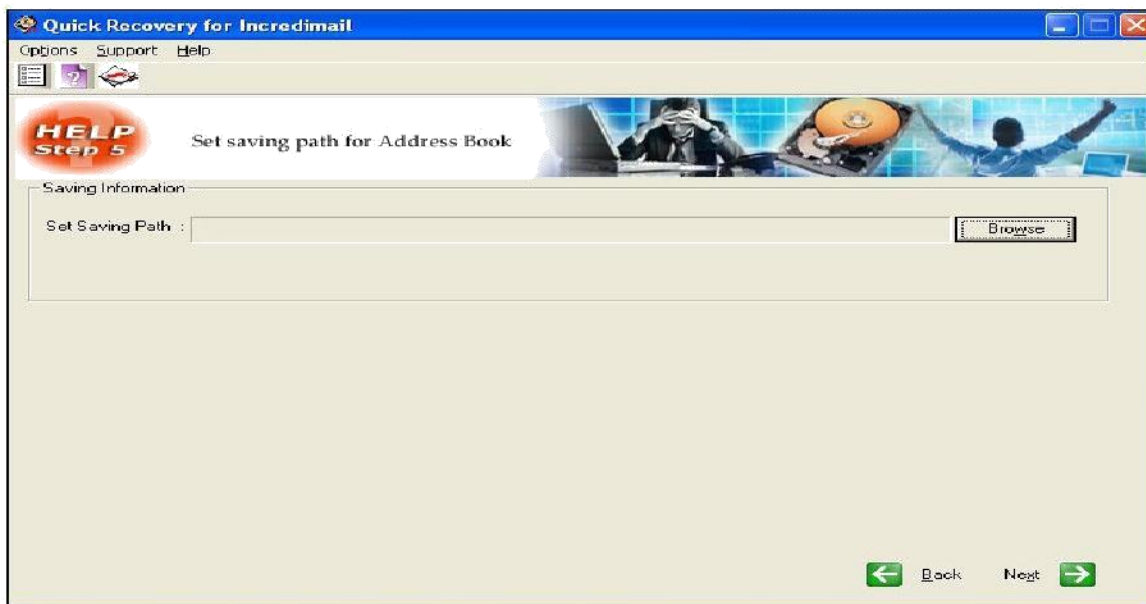
### 3. Using Recover and Repair Address Book option

Select "**Recover and Repair Address Book**" option from first screen and click next button to continue. In the next screen select the partition (or) set start and end sector for searching address book. Click next button to continue.



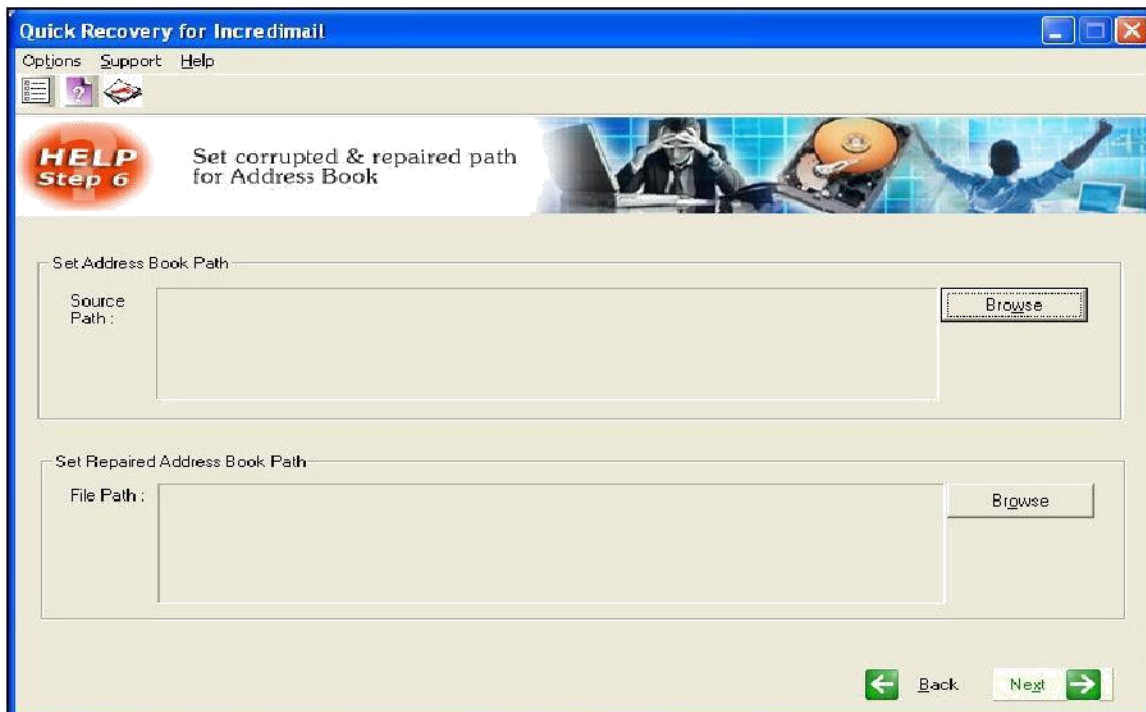


In the next screen select saving path for recovered address book file. Click Next to get the damaged address book back.



#### 4. Using Repair Address Book option

Select "Repair Address Book" option from first screen and click next button to continue. In the next screen select corrupted file and repaired path for IncrediMail Address Book.



Click next button to continue. In the next screen Quick Recovery will extract all addresses and a text file will be created.

### **System Requirements**

- Windows NT/2000/XP/2003 Server/Vista/ Windows 7/ Windows 8/Windows 10
- 800MHz processor or higher.
- RAM:
  - 256 MB (Windows XP)
  - 1 GB (Windows Vista, Windows 7 & Windows 8, Windows 10)
- 50 MB available hard disk space

### **FREQUENTLY ASKED QUESTIONS**

**In Incredimail I cannot open a folder with a few thousand messages in it. Having installed QR for Incredimail, I found that the program performs the process of message recovery very slowly. What can influence the performance rate of recovery?**

QR for Incredimail uses a unique technology for recovering messages from the damaged Incredimail files and both the size of the file and the processing power of the computer influence the performance rate. Approximately the performance rate is 5 Mb/minute for a computer based on the P-III processor with 1GHz. You can install QR for Incredimail on a computer with high processing rates and copy the damaged .imh files to it for recovering. It does not influence the recovery rates whether the folders have been previously compacted or not.