



Quick Recovery for MS Outlook

Quick Recovery for MS Outlook is a software product for restoring destroyed or damaged data files of Microsoft Outlook mail client included into the Microsoft Office package. Outlook stores its data in PST files; these files contain messages, contacts, tasks, notes, appointments, and journals. Quick Recovery for MS Outlook reads the damaged PST file, identifies and restores information in the file. Quick Recovery for MS Outlook saves the recovered information in a new PST file or in several files. Quick Recovery for MS Outlook is an automated; do-it-yourself mail recovery software. It is capable of recovering and repairing MS Outlook messages preserving the original folder structure using its unique Guided File Excavation Technology (GFETch) technology. A separate subfolder is created on the disk for each MS outlook folder. Quick Recovery can recover recent accidentally deleted Outlook messages.

Features

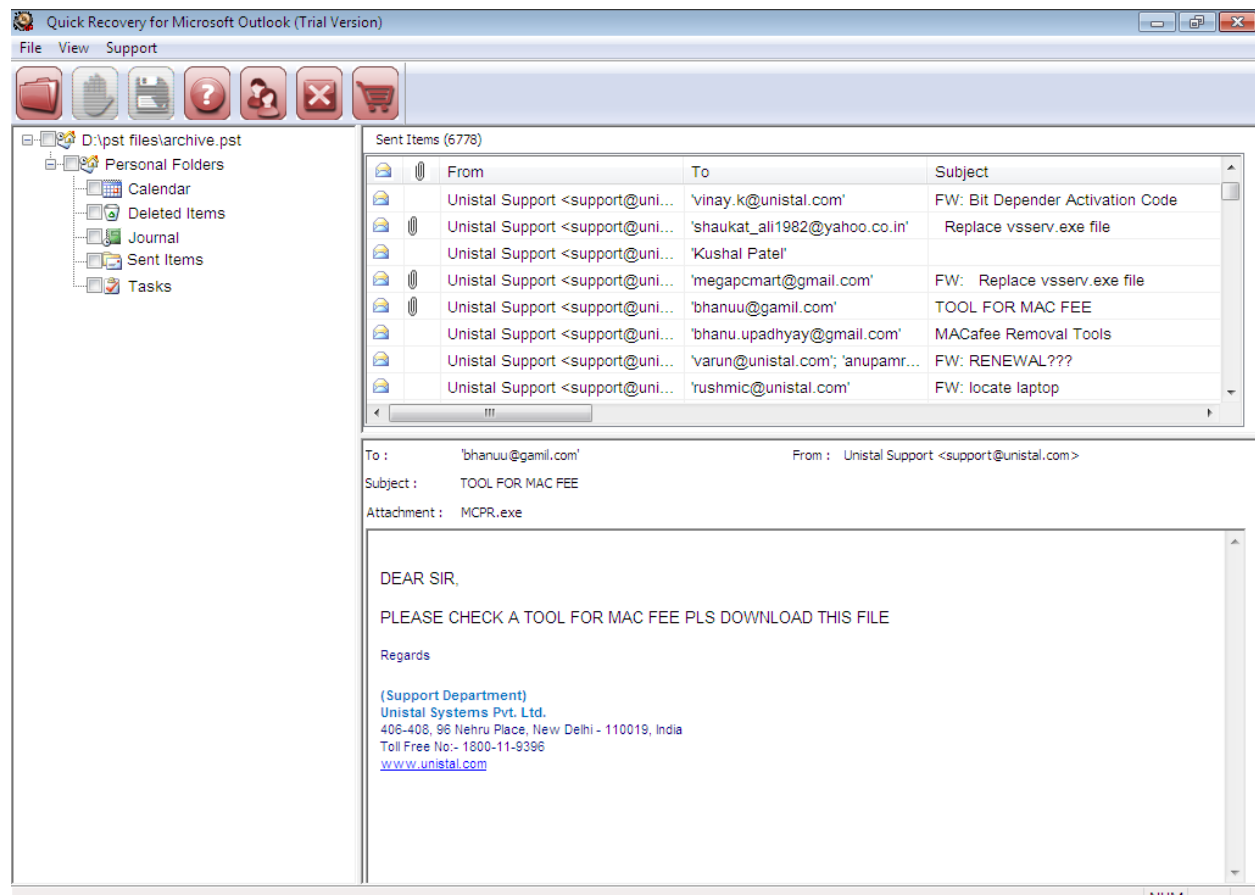
Interface

System Requirement

Features

- Recover all the objects & items in Microsoft Outlook such as email Messages journals, contacts, calendar, notes, tasks and attachments.
- Recover emails from corrupt, damaged PST file.
- Displays the item count for each folder.
- Software creates separate folders for all emails, deleted Items and for other items such as calendar, journals, notes, contacts, tasks etc.
- Recover even the Password Protected PST file.
- Recovers complete attachments, zipped attachments, images.
- Displays the preview of the distribution lists after recovery.
- Allows you to save the list of retrieved emails in html format.
- Recovered emails are displayed in a tree like preview and data of the emails can be seen before saving them.
- Supports recovery of PST files created in Microsoft Outlook 2010, 2007, 2003, 2002 and 2000
- Recover mail messages in plain text, RTF and HTML format.
- Recover all properties, such as Subject, To, From, CC, BCC, date, etc., are recovered.

Interface



MS Outlook Versions Supported

- MS Outlook 2010, 2007, 2003, 2002 and 2000

System Requirements

- **Operating System** : Windows 7, Vista, XP, Server 2008, Server 2003
- **Processor** : 800 MHz processor or higher
- **RAM**: 512 MB for (Windows XP/server 2003) and 1 GB for (Windows Vista/Server 2008/7)
- **Hard Disk** : 50 MB available hard disk space